

Twickenham & Richmond Tribune



Contents

TickerTape

South Western Railway

The Tree Agency

Beethoven: The Revolution Begins

Letters

Twickenham Yacht Club Open Day

Local Green Party councillor slams Planning Inspector's "bizarre" ruling on the Stag Brewery development

Penny Frost Elected Mayor

Have You booked Your Free Ticket?

Public Event - The Thames in Teddington – (Imminent) Threats, Risks and Hopes

Upcoming closure of Dukes Head Passage in Bushy Park

Free open day event to celebrate ETNA's 40th anniversary

Richmond Volunteer Fair

Next week at Richmond Council

Permanent works start on Richmond to Kew towpath

Twickers Foodie: A Cocina Vasca

Gibraltar Rocks Package

Looking Back

Things are not always as they seem...

Mark Aspen Review: Marie and Rosetta

Mark Aspen Review: Relatively Speaking

Mark Aspen Review: Laburnum Grove

Songs and Sonnets

St Mary's University Acting Graduate Named Finalist Amongst the Most Promising Emerging Performers for Spotlight Prize

A-Level Politics Students Take Theatre Trip to Watch 'Kyoto' Play

Support community-led initiative to revitalise green space on Grosvenor Road

Women's Rugby World Cup 2025 trophy tour inspires students in Richmond upon Thames

English rugby's second tier reveals new competition format and brand as it gears up for the 2025-26 season

Match Preview: Brentford v Fulham

WHO warns of slowing global health gains in new statistics report

Kettner Concerts

TYC

Green Party

James Knight

Richmond CVS

Mike Pemberton

The Royal Parks

ETNA Community Centre

Richmond CVS

Richmond Council

Alison Jee

Sunborn

Teresa Read

Deep Patel

Mark Aspen

Andrew Lawston

Gill Martin

Hampton Choral Society

St Mary's University

Richmond College

Habitats & Heritage

Richmond Council

RFU

Brentford Football Club

WHO

Editors: Berkley Driscoll, Teresa Read

TickerTape - News in Brief

South Western Railway

Altered train services and buses replace trains in the Barnes area **Saturday 17 May**

The lines between **Clapham Junction and Barnes** will be **closed all day** due to maintenance work.

Queenstown Road station will be **closed all day**. Please use other nearby stations.

Due to the diverted services, some services via **Wimbledon** will be **revised**.

- **London Waterloo to Reading** services will depart **London Waterloo earlier** and will be diverted between **Clapham Junction and Twickenham**. These services will call additionally at **Kingston and Strawberry Hill**.
- **London Waterloo to Windsor** services will be **revised**. These services will be diverted between **Clapham Junction and Twickenham via Kingston** calling at all stations.
- **London Waterloo to Weybridge via Staines** services will be **revised** and will start from **Barnes**.
- **London Waterloo to London Waterloo via Richmond and Wimbledon** services will be **revised** and will run between **Barnes and Kingston via Richmond only**.
- **Buses** will run between **Clapham Junction and Barnes**.
- **London Waterloo to Hampton Court** services will be **revised** to run **hourly** and will start from **Surbiton**.

Altered train services and buses replace trains in the Barnes area **Sunday 18 May**

The lines in the **Barnes** area will be **closed all day** due to maintenance work.

Queenstown Road station will be **closed all day**. Please use other nearby stations.

Due to the diverted services, some services via **Wimbledon** will be **revised**.

- **London Waterloo to Reading** services will be **revised** to depart **London Waterloo earlier** and will be diverted between **Clapham Junction and Twickenham**. These services will call additionally at **Wimbledon, Kingston and Strawberry Hill**.
- **London Waterloo to Windsor** services will be **revised**.
An **hourly** service will be diverted between **Clapham Junction and Twickenham via Kingston** calling at all stations.
An **hourly** service will start from **Richmond** calling at all stations.
- **London Waterloo to London Waterloo via Richmond and Wimbledon** services will be **revised** and will run between **Richmond and Kingston only**.
- **Buses** will run between **Clapham Junction and Twickenham via Richmond**.
- **London Waterloo to Woking via Staines** services will start from **Kew Bridge**.
- The afternoon and evening **London Waterloo to Kingston via Hounslow** services will **not** run.
- **Buses** will run between **Clapham Junction and Kew Bridge**.
- **London Waterloo to Hampton Court** services will run **hourly**.



The Tree Agency

darryl parkin

The Treehouse
 25 King Edwards Grove
 Teddington, Middlesex TW11 9LY
 Telephone 020 8274 0107
 Mobile 07960 123580
 Fax 020 8274 0119
 info@thetreeagency.co.uk
 www.thetreeagency.co.uk



The Tree Agency



Kettner Concerts

In Twickenham

BEETHOVEN

THE REVOLUTION BEGINS

The Three Piano Sonatas Op. 2

Cristian Sandrin, piano

as featured on



Join acclaimed pianist Cristian Sandrin for an extraordinary evening showcasing Beethoven's complete Opus 2 Piano Sonatas. Written to challenge the legacy of Mozart and Haydn, these three early piano sonatas mark Beethoven's explosive composition debut and his emerging unique voice within the musical world of Vienna.

Witness the complete cycle performed in the sumptuous acoustics of the St Mary's Church, in the heart of Twickenham - a rare opportunity to hear these sonatas live.

Tickets: £15 General Admissions
£10 Concessions (Under 18s, Students)



Book tickets on [Eventbrite.co.uk](https://www.eventbrite.co.uk) or
scan the QR code

Saturday
17 May 2025

6.00 pm

St Mary's Church
Twickenham
Church Street
TW1 3NJ

The Kettner Society is a
registered charity (1161105)
Contact: kettnerconcerts@gmail.com

Dear Editors,

Response to Cllr Ehmann

Cllr Ehmann complains of publications in *Tribune* criticizing the Council's approach to consultation. To quote the Council's website: "We carry out consultations with our residents, businesses and others with a local interest to ensure we have fully taken into account their views before making decisions that affect them". Interpretation of the word "fully" here is surely an open matter, that should be able to be discussed freely by residents, as opinions may vary.

Cllr Ehmann's letter by implication shows he also dislikes what he calls ad hominen attacks on Council members. Surely he has been a politician long enough to know that it can be a life of hard knocks, and that many decisions will not be popular? How do residents voice their opinions? Not so long ago, the *Richmond and Twickenham Times* concerned itself purely with Borough news; it had both an even-handed weekly editorial column and a lively Letters page; there was also Twickerati, where much political matter could be discussed. The latter is now gone, and the former is completely changed; the Leader of the Council has a fortnightly political column, to which there is no way to respond. The letters page and editorial have disappeared.

On the national level, there are newspapers on the left, middle ground and the right, that often contain excoriating ad hominem and policy attacks. I ask again – where are Borough residents able to express in public their views on Council matters? X is unsatisfactory, as one can be blocked, preventing comments appearing.

It seems highly desirable from a democratic viewpoint for an alternative medium to be available where political opinions from all aspects can be expressed; the *Tribune* provides such.

Cllr Ehmann doth protest too much, methinks.

Jeremy Hamilton-Miller,
Twickenham

Dear Tribune,

Rank Hypocrisy

In last week's Tribune, Richmond Councillor Alexander Ehmann directed a completely unwarranted criticism of my letter to the Tribune the previous week. His letter shows that he completely misconstrued what I wrote and, like most politicians, has attempted to turn it into self-aggrandising advantage.

Just like some of his LibDem colleagues, Cllr Ehmann seems unable to resist the temptation to subject to sarcasm anyone who dares to express doubts about their policies. Council meetings are littered with the corpses of unfortunates who have suffered his tongue-lashings.

Cllr Ehmann's letter stated:

'The argument apparently being, that to hold an evening meeting seeking ideas from residents on transport improvements for the next 15 years was some how (sic) a slight on the day and veterans.'

*'I found the attacks concerning personal and laden with xenophobic dog whistle politics: "**Victory for Ehmann**" invoking my German-origin surname in a willful (sic) juxtaposition with the VE commemorations. Shameful.'*

In fact, my letter implied no such things.

Firstly, I was concerned that holding any public meeting on a commemoration day might mean that many veterans who had already had a busy day at memorial services might be too exhausted to attend.

Secondly, my phrase '**Victory for Ehmann**' was merely a light-hearted attempt to show that a number of his Council's proposals have gone ahead despite their so-called 'consultations' showing that only a minority of the population agreed with them. I have lost count of the friends and neighbours who have said to me that Richmond Council is a dictatorship and that, whatever one's views, the Council always wins.

As to my own background, may I say that my grandfather and uncle were regular officers in the British Indian Army. My father was one of the founding members of the Special Air Service who saw active service throughout World War II including the famous Operation Bulbasket in which he parachuted at night into France to disrupt enemy movements. Many of his men were captured and executed by the SS but my father managed to escape to fight in other theatres of war. My stepfather was a highly decorated World War II Royal Air Force Bomber Command pilot being awarded the DFC for his action in the 1948 Berlin Airlift and subsequently awarded the OBE (Military) for his services in the Middle East during the Kuwait crisis. Not only that, but my uncle died for this country in Burma, killed by a sniper only a few days before the war ended in 1945.

Thus was I brought up as a military daughter steeped in the traditions of both services. I bear no ill will whatsoever to the German or Japanese nations despite my uncle's death and my mother and I have had a lifelong love of Japan, its people, and its culture. I make regular contributions to the Royal Air Force Benevolent Fund despite Cllr Ehmann and his colleagues thinking fit to increase their own allowances and my council tax – thus reducing my already limited pension in common with many other retired residents.

I suggest that this petulant councillor should think more carefully before directing unjustified criticism at me.

Name and Address Supplied

Dear Tribune,

People in glass houses...

Last week's letter by Cllr Alexander Ehmann criticising my letter and that of another resident in the previous Tribune deserves a proper response as I believe he has missed the various points of both letters.

Firstly, Richmond Council's consultations:

Three previous consultations, namely Twickenham Riverside (only 0.3% in favour, reportedly hailed by the Council leader as '*broad public support...by countless residents*'), 20mph speed limit (only 5% in favour), and Ultra Low Emission Zone (only 19% in favour), clearly show that scant notice is taken of those who dissent.

Secondly, the manners exhibited by certain members of Richmond Council leave much to be desired. One example of this was in 2020 when Cllr Michael Wilson had stated in a Council meeting: "*The murder of George Floyd sent shockwaves around the world*".

As his speech was made eight months before the trial, and it is an established principle of law that a person is innocent until proven guilty, I lodged a formal complaint about his prejudicial misuse of the word '*murder*' by a public servant. Being pronounced guilty before trial is a slippery slope indeed.

My complaint was upheld so I then asked whether Cllr Wilson would publicly apologise at the next online Council meeting.

Instead of a simple apology which would have ended the matter, he chose to subject me to an aggressive, irrelevant tirade about the Black Lives Matter campaign. Neither the meeting's chairman, Mayor Cllr Geoff Acton, nor the Council Leader intervened to moderate his insulting behaviour. Nor was I allowed to make any response in spite of the fact that, during my 17 years as a special constable, I received numerous thanks from victims of racial abuse and violence whom I had helped. My neighbours who watched this meeting were shocked by the conduct of these Council officials.

On another occasion, when I offered to personally pay for a publicity campaign to stop cyclists endangering us all by riding illegally on footways, the only response was for me to be subjected to political sarcasm by the so-called 'Borough Safety Officer'.

Other concerns have been simply ignored.

Cllr Ehmann's letter also made somewhat disparaging remarks about the Twickenham and Richmond Tribune. In fact, councillors should be grateful to the Tribune because well-founded comment is the basis for improvement in any walk of life. Unlike many politicians blinded by their own political dogma, I have always found criticism extremely beneficial to all my endeavours.

It is a sad fact that ANY dictatorship believes it has an unfettered right to do whatever it likes.

Democracy may well be the rule of the majority – but must not be at the expense of the minority.

It would therefore behove Richmond Council to take proper notice of those who do not blindly agree with it, thus demonstrating a graciousness so often noticeable by its absence.

In view of all that, is it any wonder that so many are so sceptical of so few?

Michael Jay
Hampton.



Welcomes you to our...

OPEN DAY



2025

SUNDAY

29TH JUNE

11AM - 3PM

FREE ENTRY

*For all ages & abilities!
Parent and/or guardian must be present at all
times for all under 16's participating.*

A volunteer led members club where everyone has a passion for the water!
Come along, get involved & most of all have fun!



COME AND TRY DINGHY SAILING & PADDLEBOARDING
MEET THE MEMBERS AND EXPLORE
THE CLUB'S TRAINING, CRUISING,
YACHTING & OUR MEMBERSHIP

Buoyancy aids provided & wear clothes you don't mind getting wet!
Snacks & drinks available for sale.



Visiting Times for the Public: Sun 12 - 4pm and Wed & Fri 8-11pm.
More information: www.twickenhamyc.co.uk



Local Green Party councillor slams Planning Inspector's "bizarre" ruling on the Stag Brewery development

For months, the local community in Mortlake has been holding its breath waiting for a decision from the Planning Inspector on the proposal to redevelop the old Stag Brewery in Mortlake for housing and a new secondary school. Finally, the verdict has arrived: the Inspector has approved the developer's proposal – but with only 7.5% affordable housing. This means that only 52 social rent homes and 13 shared ownership homes out of the total 1075 flats will be available at genuinely affordable rents.

Astonishingly, the Inspector rejected the developer's offer of 12% affordable housing (106 homes) on the grounds of "economic uncertainty". Local residents and community groups are baffled by the decision. Green Party Councillor Niki Crookdake, who supported local community groups in the appeal process, reflected the reaction of many local people to the decision: *"It's a bizarre decision, particularly in the light of the current government's supposed commitment to a major increase in building affordable homes. In fact, the Planning Inspector even refers to the Labour government's statement committing itself to the 'biggest growth in social and affordable housebuilding in a generation'. How is only 7.5% affordable housing at The Stag supposed to get us anywhere near that target?"*

The Inspector's decision does leave the door open for the Council to review the development as it proceeds and to mandate further affordable homes if economic conditions improve. However, in Cllr Crookdake's view, this will not deliver more affordable homes: *"You only have to look at other developments that have had the same mechanism to see that it won't happen. Just like at Teddington Riverside, absent foreign buyers will purchase £1m+ flats in the new Stag development, or they will be left unsold."*

More than 5,000 people are on the social housing register waiting for homes, and last year Richmond Council spent £4.2 million on direct homelessness costs. As the Opposition on Richmond Council, Green Party councillors have consistently pointed out that Richmond's affordable housing delivery has been significantly worse than other local authorities, delivering only 46 affordable homes over the last three years. The answer has often been that developments such as The Stag and Ham Close will fill this yawning gap. However, the number of new homes classed as genuinely affordable in the Ham Close development is only increasing by 57. Taken together with the 65 proposed affordable homes in The Stag, this is nowhere near enough to help the huge number of struggling residents waiting for permanent social housing.

The Inspector's decision also does nothing to alleviate local residents' concerns about the additional traffic that will be generated by the development, particularly if a new secondary school is built on the site.

So what is Cllr Crookdake's verdict on The Stag? *"So much for a new heart for Mortlake. Once again existing residents, many of whom so badly need support with housing, are left out on a limb."*

Penny Frost Elected Mayor

in Ceremony Marked by Warmth, Ritual—and Administrative Oversight

By James Knight

A traditional evening of pomp and pageantry at York House on Tuesday saw Cllr Penelope Frost formally elected as Mayor of Richmond upon Thames for the 2025–26 municipal year. In a meeting that blended ceremonial grandeur with heartfelt tributes, councillors and guests welcomed Cllr Frost with applause, warm words, and her daughter and newly appointed consort, Rebecca Moul.

Yet behind the ceremonial smiles and bouquets, the meeting once again revealed a growing unease about the Liberal Democrat administration's grip on process, with ongoing procedural slippage at the heart of council governance.



“A Great Honour” for the New Mayor

Taking office with visible pride, Cllr Frost thanked the residents of Ham, Petersham and Richmond Riverside for their continued support, and pledged to champion the voluntary sector during her term. She named two charities, Small Steps and Crossroads Care, as her mayoral causes—both working closely with vulnerable families and carers.

Tributes were also paid to outgoing Mayor Richard Pyne, whose year in office was marked by over 200 **public engagements, from civic services to care home** visits. The council chamber heard generous words about his tireless commitment and quiet humour. “We have had a wonderful year,” he said, praising community spirit as the borough’s greatest asset.

SEND Record Comes Under Quiet Scrutiny

Less comfortably for the Liberal Democrat leadership, however, Tuesday’s meeting also marked Cllr Frost’s departure from her previous role as Chair of the Education and Children’s Services Committee. This tenure has increasingly come under criticism from parents and campaigners concerned about Richmond’s faltering record on Special Educational Needs and Disabilities

(SEND) education and a constant stream of complaints to the local Government Ombudsman.

While there was no formal debate on the issue during the meeting, several critics noted in private that under Frost's leadership, the borough continued to fall behind in assessing Education, Health and Care Plans (EHCPs) within statutory timeframes, which led to delays in vital support for some of the borough's most vulnerable children. The new Chair of the Education and Children's Services Committee, Councillor Julia Cambridge, will now face the task of restoring confidence in the service and addressing persistent concerns raised by parents and campaigners.

Reports Circulated Late—Again

Of wider constitutional concern was the now-familiar failure to circulate all council reports within the statutory five working days' notice period. Items regarding committee appointments and outside body allocations had to be tabled under Section 100B(4) of the Local Government Act 1972 as matters of "special urgency"—a procedural workaround.

While no councillor challenged the practice during the meeting, some legal observers have pointed to a broader issue: since Richmond's Monitoring Officer function was merged with Wandsworth, there has been a noticeable increase in procedural lapses, delays in paperwork, and miscommunications. Critics argue that losing a dedicated Monitoring Officer for Richmond risks undermining basic standards of local government legality and transparency.

"It's a quiet erosion of constitutional best practice," remarked one former councillor. "Good governance depends on timely papers, clear accountability and officers with borough-specific knowledge. Sharing the monitoring officers' role with Wandsworth was never going to deliver that."

The Year Ahead

With Cllr Frost now in place and the leadership team of Cllr Gareth Roberts, Cllr Jim Millard, and Cllr Julia Neden-Watson reappointed, the Liberal Democrat administration enters the next council year facing increasing scrutiny with the local election in May 2026. From SEND delivery to internal governance, questions persist—not about the borough's values, but about the competence and rigour with which they are being implemented.

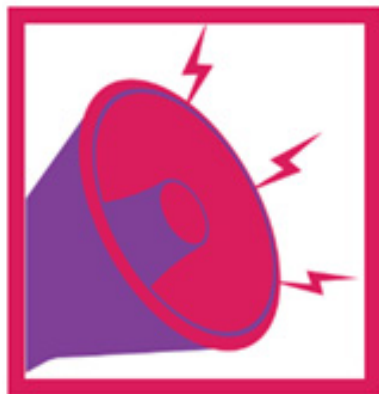


Have You booked Your Free Ticket?

From Richmond CVS

There's still time to book your free ticket for this year's Richmond Volunteer Fair at Richmond and Hillcroft Adult Community College on Wednesday 21 May 2025, from 2pm to 6pm.

With 50+ local charitable organisations to chat to, expect to find something of interest for everyone.



Richmond Volunteer Fair 2025

Wednesday 21 May 2025, 2pm - 6pm

Looking to get more involved in your community?

Sign up now to meet 50+ local organisations who would love to see you

It's a wonderfully positive free community event, whether you're ready and want to get involved with something now or you're thinking about something for the future.

The current list of stallholders includes groups with volunteer opportunities in:

- health and wellbeing
- nature and environment
- arts
- heritage
- children and young people
- neighbourhood & community
- advice
- specialist support.

They would really love to meet you!

You're welcome to drop-in on the day but registration helps to plan and manage the event, and ensures you receive useful follow-on information from the day.

Find out more and book at
www.richmondcv.org.uk.



Public Event - The Thames in Teddington – (Imminent) Threats, Risks and Hopes

From Mike Pemberton

Exploring our responsibility to pass on a clean, sustainable and fully utilised river to future generations.

The Teddington Society and The Lensbury are collaborating in an open information event on Monday June 16th to help local people appreciate the issues and understanding the threats and pressures on the Thames and how they can express their views.

The event is free but people must register for a ticket as seating at The Lensbury is limited. To find out more, visit the Teddington Society website [The Thames in Teddington - \(Imminent\) Threats, Risks and Hopes – Teddington Society](#)

Representatives of local river groups will present and lead the items and invite Q and A conversations on:

- **Thames Water's proposed Teddington Direct River Abstraction (TDRA)** this summer the big consultation is on for this proposal to extract river water and replace with treated sewage just upstream of the weir
- **The River Thames Scheme (RTS)** - this project (Environment Agency/Surrey Council) will draw more flood water into the to the Kingston/ Teddington stretch and the plan is to start major works next year to build more weir gates to cope at Teddington weir
- **Mayor of London's mission for a "swimmable river"** - a positive initiative to improve our amenity and river water quality in our local stretch above the weir
- **"Mayors for a Drinkable Thames"** – a new initiative for the benefit of both river users and wildlife from Mayors of river-fronting boroughs from Hounslow to Runnymede

Free admission by registering via the Teddington Society website as above.

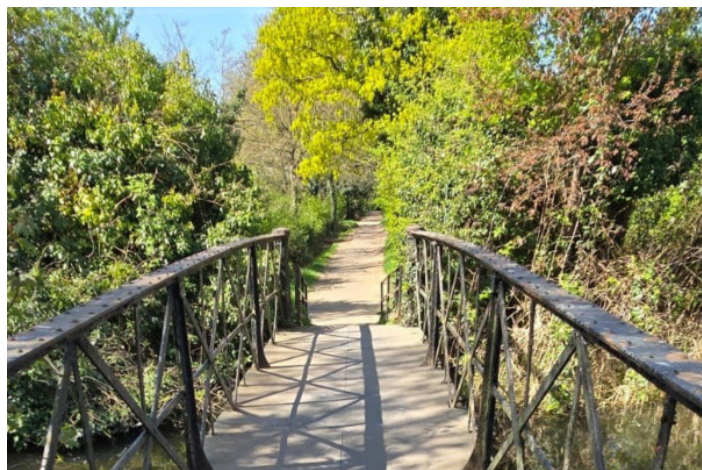


Monday June 16th 19.30 (doors 19.00) to 21.00 at The Lensbury, Broom Rd TW11 9NU

Upcoming closure of Dukes Head Passage in Bushy Park

From The Royal Parks

From **Monday 26 May to Friday 30 May 2025**, [The Royal Parks](#) charity will fully close Dukes Head Passage in Bushy Park, Hampton for essential works.



This closure is to enable a full structural survey of The Iron Bridge and resurfacing of the bridge, which will take place over three days.

During this time, access will be via Hampton Hill Gate and Hampton Gate, which are the nearest alternative routes.

Please plan your journeys accordingly. [Find out more.](#)



Free open day event to celebrate ETNA's 40th anniversary

From ETNA Community Centre

This Sunday 18 May, ETNA Community Centre is marking its 40th anniversary with an open day event. Residents are invited to join the fun and hear about the centre's amazing work.

The day will be packed with exciting activities, including live music, engaging stalls run by local groups, and plenty of family fun. Participants can look forward to a variety of performances, interactive activities and delicious food and drink options, making it a perfect day out for the whole family.

Don't miss out on this joyful celebration of ETNA's past, present and future!



- **Date:** Sunday 18 May 2025
- **Time:** 12pm
- **Location:** ETNA Community Centre, 13 Rosslyn Road, Twickenham, TW1 2AR

[ETNA](#) is a friendly neighbourhood hub right in the heart of TW1. The community centre aims to create a warm and welcoming space where people of all ages and backgrounds can come together and connect.

Richmond Volunteer Fair

Wednesday 21 May 2025, 2pm - 6pm

RHACC, Parkshot, Richmond, TW9 2RE

Register at www.richmondcvcs.org.uk



Richmond
Volunteer
Service

020 8843 7940



Registered charity number 1075259

Richmond
CVS



empower - enable - involve

Next week at Richmond Council

On Tuesday, 20th May, the **Licensing Sub-Committee** will convene to discuss the opposed licence application for Universal Tech and Vape, 137 Percy Road, Whitton. Two councillors are opposing the application. The online meeting will begin at 10:30 a.m.

For details, click [HERE](#)

On Wednesday, 21st of May, the **Planning Committee** will meet to decide the application to build an independent school at Kneller Hall, Kneller Road, Twickenham. The meeting will commence at 7 pm at York House.

For details, click [HERE](#)

For guidance on how to participate at different types of council meetings, such as speaking or asking written or verbal questions, please click [HERE](#)

Permanent works start on Richmond to Kew towpath

From Richmond Council

Major repair works on the Thames towpath between Richmond Lock and Kew Gardens car park (Ferry Lane) are underway.

We are currently removing sediment from the main channel of the river so sheet piling works can start on site.



Works are expected to be completed in summer 2025. Click [HERE](#) to view video

Find out [more about the Richmond to Kew towpath works](#)

A Cocina Vasca

If you've ever been to the Basque region of Spain, you'll have discovered the wonderful food that's associated with the area. I recall the most fabulous pintxos in downtown Biarritz, and one of the most delicious (and best value) Spanish meals I've ever eaten. And now I can introduce you to a lovely new book that will take you on a virtual tour of this region...***La Cocina Vasca*, by María José Sevilla**. It was published last month by Ryland Peters and Small at £22 for a beautifully illustrated hardback book.

In *Cocina Vasca*, María José takes readers on an illuminating tour of the Basque region. Along the way she introduces iconic ingredients, unique cooking techniques and traditional dishes that have inspired some of today's most celebrated chefs. An introduction to Basque cooking, ranging from those aforementioned bite-sized tapas known as pintxos, to more substantial fish and meat plates as well as delicious desserts, including, of course, the legendary Basque Cheesecake (see below for recipe). Essays that shine a light on the most interesting aspects of historical food traditions, as well as the modern scene, are set against a backdrop of the stunning images of the people and surrounding landscape.

María José is an expert in Hispanic gastronomy and viticulture. She has written a number of books including *Cocina de Andalucía* which I reviewed a while ago.

Here, for your mouth watering trip to Spain, are a couple of recipes from this lovely book.

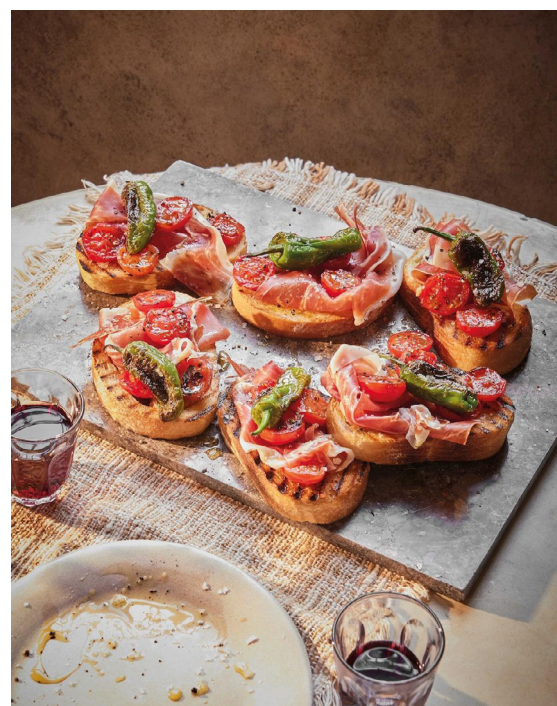
Pintxo de tomate, pimiento del Padrón y jamón Ibérico **TOMATOES, PADRÓN PEPPERS & IBÉRICO HAM ON TOAST** MAKES 6

This particular pintxo can be scaled up for brunch; simply increase the quantities and serve on thick slices of the best rustic bread you can find.

- 3 tablespoons Spanish extra virgin olive oil
- 12 cherry tomatoes, halved
- few drops of sherry vinegar
- 6 padrón peppers
- 6 slices of rustic bread, toasted
- 1 fat garlic clove, peeled and halved
- 6 slices of Ibérico ham (with plenty of fat)
- pinch of coarse sea salt flakes

SHERRY REDUCTION

- 1 tablespoon Pedro Ximénez sherry
- 2 tablespoons sherry vinegar



1. To make the sherry reduction, heat the Pedro Ximénez sherry and sherry vinegar in a small saucepan until it has reduced by one-third.
2. Heat 1 tablespoon of the olive oil in a frying pan. Once hot, place the tomatoes, cut side down, in the pan so they are not touching each other. Season with sea salt. Add a few drops of sherry vinegar along with the sherry reduction, then cook until the tomatoes take on a little colour, turning them only once.
3. At the same time, in a separate pan, cook the padrón peppers in 1 tablespoon of the olive oil for a few minutes until lightly charred. Season with sea salt.
4. To assemble the pintxos, rub the toast with the cut-side of the garlic clove, then drizzle with a few drops of the olive oil. Top each slice of toast with some ham, a few tomatoes and a padrón pepper. Serve hot, as soon as possible after cooking the tomatoes and peppers.

Tarta de queso de La Viña en San Sebastián

BAKED CHEESECAKE FROM LA VIÑA IN SAN SEBASTIÁN SERVES 6–8

"It is easy to understand why this Basque baked cheesecake has become so popular, admired throughout the whole of Spain and, indeed, across the rest of the world. It has an unusual caramelised – almost burnt – exterior with the creamiest, silkiest interior. It was created in 1990 by Santiago Rivera, chef patron of La Viña in the heart of the Basque city of San Sebastián."

"This cheesecake rapidly became known as 'the jewel in the Spanish sweet crown'. For me, it is certainly one of the jewels, as there are many."

- 570 g cream cheese (such as Philadelphia)
- 4 large eggs
- 230 g caster sugar
- 1 teaspoon vanilla extract
- 10 g plain flour, sifted
- 285 ml double cream
- deep 18-cm/7-inch springform cake tin with removable base

1. Preheat the oven to 200°C/180°C fan/400°F/Gas 6.
2. Tear off a sheet of parchment paper that is large enough to line the entire cake tin and generously extend well over the top edge. Dampen with water to soften the paper and then, using both hands, ring out as much of the water as possible. Line the cake tin with the paper.
3. Put the cream cheese into a deep mixing bowl. Using an electric hand mixer, slowly incorporate the eggs, one by one. Add the sugar and vanilla extract, then
4. whisk again. Do the same with the flour.
5. Once all these ingredients are well blended, gradually add the cream until fully incorporated.
6. Pour the cheesecake mixture into the lined cake tin. Bake in the preheated oven for about 45 minutes or until the top looks almost burnt, but the inside is just
7. set.
8. Leave to cool completely, then remove from the cake tin and peel away the parchment paper before slicing and serving.



sunborn
GIBRALTAR
YACHT HOTEL RESORT



GIBRALTAR ROCKS PACKAGE

STAY ON THE ONLY PURPOSEFULLY BUILT 5 STAR FLOATING YACHT
HOTEL IN THE WORLD AND EXPERIENCE A BRITISH TERRITORY
IN THE MEDITERRANEAN!

2 nights in a Superyacht Deluxe Room

Substantial breakfast buffet including Full English Breakfast

Bubbly Afternoon Tea for 2 guests on the top deck

Discover Gibraltar's Top Attractions with Gibraltar Pass

Price £489.00 per package for 2 guests
(plus £3 per person / day tourism tax)



GibraltarPASS



BOOK NOW | WWW.SUNBORNGIBRALTAR.COM | RES@SUNBORNGIBRALTAR.COM

Looking Back

Teresa Read

The Most Famous Ice Rink in the World

Many well-known skaters trained at the ice rink in East Twickenham including Torvill and Dean and Robin Cousins. Members of the royal family such as Prince Andrew also skated at Richmond Rink. Richmond Ice Rink, considered by many as the spiritual home of British ice-skating, is a legend in the London Borough of Richmond upon Thames; the rink was at the heart of the community where children grew up and socialised and where many met their future partners such as professional ice dance teachers Anne and Roy Lee.

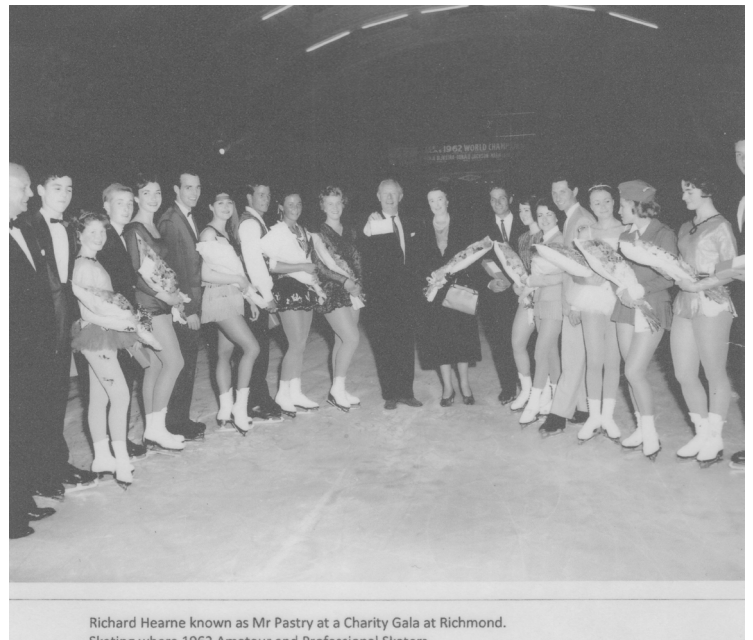
For over 13 years, Richard Meacock battled to have a new ice rink built for the people of Richmond upon Thames ... and the world. The old rink, long a landmark on Richmond's Riverside, served more than 4,000,000 people in its long lifetime. Most were ordinary skaters; some were World Famous: John Curry, Robin Cousins, Torvill and Dean and legendary coaches Arnold Gerschwiler and Betty Callaway. But, famous or not, the rink was special to everyone; opened in 1928 Richmond Ice Rink closed its doors forever in January 1992.



Robin Cousins with some children training at Richmond



Anne Lee teaching the toddlers class Feb1988



Richard Hearne known as Mr Pastry at a Charity Gala at Richmond. Skating where 1962 Amateur and Professional Skaters

Things are not always as they seem...

By Deep Patel

~ Life Through the Eyes of a Twickenham Shopkeeper ~



This week I have been noticing that no matter how many “things” people have...there are some things that they can’t buy... They often seem like they have everything in life...the house...the car...the career...the clothes...and even the shoes...but do they have everything? You see, we always think the grass is greener on the other side...but things are not always as they seem. I have spent years observing people in my shop, and without realizing it, I built up an image in my head of how their life must be, what their daily routines must involve, how their houses must be and even what they may be having for tea...but oh how wrong I can be...so wrong...in so many cases. You see, what you see is not always true...sometimes it’s all a front...a sort of act...to hide something deeper...to mask the truth...the simple truth that not everyone is as happy as you think they are...

It’s not the car, house, career or shoes that make a person happy. Yeah, they may in the short-term, but we really need something more...something more than just the materialistic joys that we tell ourselves will make us happy. What people lack more than anything else is companionship, someone to talk to, someone to share their happiness and sadness with, someone to reassure them when they are feeling doubtful, someone to remind them of just how wonderful they and indeed this life we are all living truly is...I am not talking romantically here, I mean just interaction with another human being...someone to be there...someone to talk to...sometimes that’s all a person needs, and that’s the only thing they haven’t got.

So as a shop keeper, I make sure I can be that person for those who come in needing just that. In fact, I make sure that they know that they do not have to buy anything, they can just come in for a chat. I am there for them, open, ready, and willing to listen. Since I have adopted this attitude, so many people have come in “just for a chat”...and I encourage that, because my shop exists not just for selling digestive biscuits and salt and vinegar crisps, rather as a place where people can come and have a good chat, get something off their chest or simply to feel a part of something other than themselves...to be happy. So next time you see someone and think that they have everything they could possibly desire in life...think of this article and remember...things are not always as they seem...not by a long shot...

Remember...

“All that glitters isn’t gold...”

MY CREATURE KINDNESS TIP OF THE WEEK...

STOP ANY INSECT KINDLY (GOOD KARMA):

Sprinkle pure essential peppermint oil, Olbas oil, fine black pepper around places where you don’t want them to come (but NOT directly on them) ...they will go without you having to harm them. For ANY specific tip to stop any “pest” or insect KINDLY (for good karma/blessings), email me: InsectLoversUnite@gmail.com or join my Facebook page: “INSECT LOVERS UNITE”.

Marie and Rosetta

by George Brant

Chichester Festival and ETT at the Rose Theatre, Kingston until 24th May, then on tour until 26th July

The importance of Sister Rosetta Tharpe, “Godmother of Rock and Roll” in the evolution of rock ‘n’ roll, and her influence on early stars from Little Richard to Elvis Presley, has only recently resurfaced. The musical play *Marie and Rosetta* distills the essence of her long career into one evening in Mississippi in 1946, when Rosetta and her young protégée Marie Knight meet. Rosetta hoped that, playing as a duo, the crisp clean gospel style of the good-looking talented Marie would reconcile her detractors. This focus gives a detailed and intimate exploration of family, fate and faith.



Their first concert together took place in an old warehouse, such was potential hostility, and the safest place for them to rehearse was in the local undertakers! [Lily Arnold](#)’s stylish symbolically circular set is a shag-carpeted funeral parlour, complete with coffin.

Sister Rosetta Tharpe is played by acclaimed soul artiste, Beverley Knight, whereas Marie Knight is performed by relative newcomer, the versatile Mtombizodwa Ndlovu. Yet they gel remarkably together, both in their totally mutually engaged

acting and, my, in their singing; as their characters’ lives, feelings and attitudes to faith, are gradually exposed.

Their opening songs stamp their pre-duo styles. Knight’s high octane rendering of *This Train* blasts off with a powerful rawness, whereas Ndlovu’s jaw-dropping *Were You There* (when they crucified my Lord) is movingly sung in a creamy alto, portraying a young woman with a pure simple faith in the Lord. Rosetta, in comparison, has a “rough with the smooth” kind of faith.



A joy of *Marie and Rosetta* is the singing, raw muscular music of an established star and emotional power from a star-to-be, as they meld in energy and melt in harmony together.

Their guitar playing is purely figurative as strong backing from Shirley Tetteh’s excellent four-piece band, partially hidden behind undertakers’ ruched drapes, becomes Rosetta’s “third member” the group.

Director [Monique Touko](#) moves the action with the impulse of its music and unfolding of the intimacies of its stories, energetically paced but unafraid to pause for reflection. Although today’s theatre doesn’t often “do God”, *Marie and Rosetta* shows the power of the Christian faith with, as in the gospel song, amazing grace.

Read Mark Aspen’s review at www.markaspen.com/2025/05/11/marie-rosetta

Photography by Marc Brenner

Relatively Speaking

by Alan Ayckbourn

Questors Productions at the Studio, Ealing, until 17th May

Relatively Speaking has packed theatres for six decades, and this production continues the form with a cast who play the finely-tuned dialogue perfectly and without embellishment. The play is, simply, very funny indeed.

Waking up to a silent phone call one Sunday morning, Greg becomes confused and frustrated by his girlfriend Ginny's behaviour, as well as by the bouquets of flowers and boxes of chocolates that fill her small flat, not to mention the pair of size 12 slippers he finds under her bed.

The couple spend the whole first act getting ready to leave the flat, alternately arguing, making up, and drinking tea. Adam Keenan is captivating as the good-hearted but put-upon Greg, and he has great chemistry with Emily Sanctuary's elfin and enigmatic Ginny. Despite forty minutes of banal conversation and everyday activity, they are entrancing, with solid, believable performances, and impeccable comic timing.



A striking change to Juliette Demoulin's set sees the bedsit transformed into the patio of an English country garden. Ginny has told Greg she's visiting her parents, and Greg has decided to join her to ask their blessing for the two of them to get married. Problematically, Ginny has not been entirely honest: Helen Walker's charming Sheila, and Robert Seatter's conniving Philip, are not

actually her parents. Mistaken identities and misunderstandings pile up, exacerbated by old-fashioned English hospitality and good manners.

Later, away from the patio, matters eventually reach a crisis point, which is headed off with an ending that is not exactly happy in all respects, but which is highly satisfactory, and again very funny.

Director Anne Neville's confident and hilarious production is faithful to the play's original mid-1960s setting, through the music, Jenny Richardson's wonderfully evocative costumes and Harriet Parsonage's props. Keeping the play in its original setting is a wise choice, as beyond details like four-digit telephone numbers and shillings, elements such as a middle-aged businessman chasing his secretary would be out of place in a contemporary setting. Which is not to say that the play's sensibilities are in any way out of touch. While Sheila appears to be a downtrodden housewife making every effort to placate her domineering husband, she is significantly sharper, and ends the play as the only character who fully understands everything that has transpired.

Read Andrew Lawston's review at www.markaspen.com/2025/05/10/relative-speak-q

Photography by Paula Robinson

Laburnum Grove

by J B Priestley

Q2 at The National Archives, Kew until 17th May

The approach to the National Archives passes playing fountains and tranquil waters where swans glide. *Laburnum Grove* takes us from these delightful surroundings to leafy Laburnum Grove, Shooters Green in 1933. This address epitomises smug suburbia in north London where 'nothing ever happens' Until now.

Suburban respectability is shattered by dodgy dealings, as George Radfern (Malcolm McAlister) tries to rid himself of sponging relatives by revealing a shocking part of his life. But is he really the master forger he declares himself to be? Or is he pulling the financial wool over their greedy eyes? (The play's opening song is *We're in the Money*.)



Director Terry Oakes' gentle comedy becomes edgier, as family dynamic shifts and we ponder if George is a master money man or just a genial joker. To his neighbours, he's the decent middle-class householder, smartly dressed for business by day, spending evenings tending tomatoes in his greenhouse. A perfect cover for printing fake currency and bonds?

George inhabits a cosy semi that speaks genteel living: William Morris wallpaper, fine china, ham and tongue suppers. Full marks for this set go to Bob Gingell and Harriet Muir, who also designed the impeccable period costumes.

In spite of the between the Wars economic depression, George provides a secure home for his family, wife Dorothy (Andrea Wilkins) and their fiery red-headed daughter Elsie (Anna Piggott), who is about to become engaged to Harold Russ (Dominic Parford), a car dealer who sees his prospective father-in-law as an easy touch for funding a business venture.



The stand-out act of the show is Mandy Gasson, effortlessly delivering every word and expression as Dorothy's fortune telling sister Lucy who is freeloading at the Radfern's with her ghastly husband Bernard Baxley (Paul Huggins), also trying to tap George for more money.

The entitled banana-chomping Bernard pines for his days in Singapore, servants at his beck and call. Then there's the austere no-nonsense Inspector Stack (again Harriet Muir) and doddering neighbour Joe Fletten (Chris Hodges), kitted out in Fair Isle. Is he the innocent friend frequently popping in for greenhouse advice, or an unlikely partner in crime?

George was criticised for leading such a safe, boring existence, but is he now hero or villain?

Read Gill Martin's review at www.markaspen.com/2025/05/16/laburnum-grove

Photography by Ben Gingell



HAMPTON CHORAL SOCIETY

Saturday 21 June 2025, 7.30pm

Songs and Sonnets
George Shearing

Feel the Spirit
John Rutter

Five Mystical Songs
Ralph Vaughan Williams

Musical Director Emma Warren
with professional soloists & musicians

St James's Church, St James's Road
Hampton Hill, TW12 1DQ

Tickets: £15 (Adults), £7 (Under 16's) Box Office: 020 8941 5394
On the door: contactless, card, cheque, cash
www.hamptonchoral.org.uk

Charity Number 261788

St Mary's University

St Mary's University Acting Graduate Named Finalist Amongst the Most Promising Emerging Performers for Spotlight Prize

BA Acting student from St Mary's University, Twickenham, Rolene-Annie Samba Lukeni, has been named one of just 20 finalists for this year's Spotlight Prize, an award that recognises the most promising drama school graduates in the UK and Ireland.

[BA Acting](#) student from St Mary's University, Twickenham, Rolene-Annie Samba Lukeni, has been named one of just 20 finalists for this year's [Spotlight Prize](#), an award that recognises the most promising drama school graduates in the UK and Ireland.



This year, 65 drama schools and universities – including LAMDA, Royal Academy of Dramatic Art, Mountview and Guildhall School of Music and Drama - nominated a standout student from their graduating class. Entertainment industry experts reviewed each nominee's self-taped audition and selected the [finalists](#) to perform in front of an audience of casting directors, agents, and producers.

The drama students will now prepare for the two-part Spotlight Prize Showcase in July - a long serving career-launching platform. Under the direction of British Theatre Director, [Paulette Randall MBE](#), each student will film a screen performance. Then, directed by actor David Mumeni, they will perform live on stage in front of an invited audience of key-decision makers in the entertainment industry. Of the finalists,

two winners will be selected for Best Screen Performance and for Best Stage Performance.

Rolene-Annie expressed her excitement for her recent achievement: *"Being selected for the Spotlight Prize feels like the beginning of something really exciting. It's great that I get to represent St Mary's – my time there taught me so much. This recognition reflects the environment they provide, and I'm grateful for the continued support of my lecturers and fellow students as I prepare to stand alongside such talented emerging artists."*

[Francesco Gabriele](#), Senior Lecturer in Screen Acting who coached and directed Rolene-Annie for this year's Spotlight Prize, said: *"Working with Rolene Annie has been a great pleasure, and we are fortunate to have so many talented students at St Mary's University. Her selection as a finalist among some of the UK's top drama schools is a great honour and a testament to the dedication, passion, and hard work we invest in nurturing our students. Congratulations to Rolene and to the team for the outstanding work they continue to do."*

[Mark Street](#), Senior Lecturer for Drama at St Mary's University, expressed the university's pride in Rolene-Annie's achievement: *"I am thrilled that Rolene-Annie has been recognised for her talent. We are a close community here at St Mary's, with a growing presence in the arts, and we are all so proud of her achievement. We will continue to support her through to the final in July."*

Rolene-Annie's success is a great opportunity and significant milestone for both her and St Mary's University, as she prepares to share the stage with the UK and Ireland's most promising emerging drama students."



**St Mary's
University
Twickenham
London**

A-Level Politics Students Take Theatre Trip to Watch 'Kyoto' Play

Our A-Level Politics students recently took some time away from the classroom to enjoy a trip to Soho Place Theatre in London's West End to watch ['Kyoto'](#), a political thriller based on the Kyoto Protocol of 1997.

Student Sofia recounts the experience:

"The Kyoto Protocol of 1997 had unprecedented effects on international communities and global politics, as explored in the theatre production 'Kyoto' at Soho Place. Showing the squabbles over syntax and the conflict between large states and small islands, this play depicts the tense nature of international relations. The stage design forced the audience into engagement and action as they sit levelled with the actors for much of the production; positioned on the same level as the states, sitting on the same round table."



The story follows Don Pearlman, the American lawyer, oil lobbyist and climate-sceptic and his less than savoury view on the Protocol. The darkly humorous tone of the play is on full display from the opening line, but this does not take away from the importance and gravitas of what is being dramatically reenacted.

In a time where the topics of climate change and global warming are more important and dangerous than ever, reflecting on the views of states from 1997 should show how far politics has come in regard to such issues. However, Kyoto is not interested in filling the audience with optimism when it comes to politics' relationship with climate change. The first act consists mainly of state's arguing over the adjectives and verbs to be used in the Protocol, what is going to be in whose best interest and, the big one, if climate change is actually real. By the end of the second act when the Protocol is successfully signed, there is hope that something could be done about climate change by the world's leading politicians. But, as the play's final monologue states, the cherry blossoms fall earlier every year in Kyoto and there is still more to be done by states and their politicians in regard to climate change. It was an entertaining, surprisingly humorous piece of theatre, very relevant to our course and the wider political landscape."

Support community-led initiative to revitalise green space on Grosvenor Road

From Habitats & Heritage

Local residents, in partnership with environmental charity Habitats & Heritage, are launching a transformative initiative to revitalise a neglected patch of land on Grosvenor Road, Twickenham, turning it into a vibrant green hub for both people and wildlife.



The Grosvenor Road Green Hub project will create a wildflower meadow with a peaceful walkway, offering a space for the community to walk, pause and enjoy nature. A stag beetle loggery will also be installed to support this protected species, enhancing biodiversity and linking green corridors with nearby parks and the River Crane.

Find out how you can [donate to the Grosvenor Road Green Hub](#).

With support from the Aviva Community Fund, every donation made to the crowdfunder will be doubled, helping to:

- Sow native wildflowers across a 150m² area
- Prepare the soil and plant native plug plants
- Use a no-dig approach to preserve soil health
- Install a stag beetle loggery
- Host two community activity days

This community-led initiative will not only improve access to green space but also strengthen local ecological networks and deepen residents' connection with the natural world. The team believes that small, local actions can make a lasting difference. With public support, Grosvenor Road will soon be home to a thriving pocket of urban biodiversity.

Women's Rugby World Cup 2025 trophy tour inspires students in Richmond upon Thames

From Richmond Council

The Women's Rugby World Cup trophy tour made a memorable stop in Richmond upon Thames today, bringing excitement and inspiration to the local community.

The event saw a thrilling rugby tournament take place at [Twickenham Rugby Club](#) in Hampton, where five local schools joined students from other boroughs to showcase their skills and passion for the sport.

Students from St Richard Reynolds, Grey Court School, Turing House School, Orleans Park School, and Richmond upon Thames School took part in a T1 Rugby tournament, with the added opportunity to pose for photographs with the coveted Women's Rugby World Cup trophy.

The event, organised by the RFU with support from School Games Organiser Maggie Morrell, was part of the wider Women's Rugby World Cup 2025 Trophy Tour – a celebration of world-class sport and an opportunity to inspire young athletes and encourage greater participation in women's sports across the borough. With the tournament culminating in the final at the iconic home of England Rugby in Twickenham on 27 September, the excitement surrounding the event continues to grow.



In support of this momentum, Richmond Council is moving forward with the [Richmond Moves for a Healthier Borough strategy](#). Through the initiative's Women and Girls Working Group, the Council is developing a comprehensive action plan to ensure more women and girls in Richmond are active, engaged in sports, and empowered to take on leadership roles in volunteering and employment related to sports.

Councillor Alan Juriansz, Lead Member for Sport at Richmond Council, said:

"The Women's Rugby World Cup trophy tour has been a fantastic way to ignite passion and inspire the next generation of female athletes. We are dedicated to creating more opportunities for women and girls to get active, and this event demonstrates our ongoing commitment to promoting women in sport."

The event was further supported by the Leader of Richmond Council, Councillor Gareth Roberts, along with Hampton North councillors Councillor Elizabeth Gant and Councillor Carey Bishop, all of whom joined the local community to celebrate the achievements of women in sport.

Richmond residents are encouraged to stay connected with the [Richmond Moves](#) initiative, which offers tailored updates and resources to help everyone stay active and involved in sports within the borough.

English rugby's second tier reveals new competition format and brand as it gears up for the 2025-26 season

- New competition structure includes the introduction of both champion and relegation play offs - [competition structure video](#)
- Introduction of a bold new brand identity: Champ Rugby, The Proving Ground – [brand identity video](#) and [brand imagery](#)

A transformed competition format for the second tier of English rugby for the 2025-26 season and beyond, as well as a bold new-look identity has been revealed.

Re-branded 'Champ Rugby', the competition will become a 14-team league with play-offs designed to elevate player development, club sustainability and competitive integrity. Worcester Warriors, which recently gained a place after a rigorous selection process, and Richmond, the 2024-25 winners of National League 1, will join the existing 12 clubs that currently form the Championship.



The league's new visual identity positions Champ Rugby as the proving ground for players, clubs and communities and is aligned to the growth trajectory for the league. It also supports the vision to inspire and engage current and future generations of rugby fans, while also bringing commercial sustainability and growth to its clubs.

All teams will play each other in home and away fixtures over 26 rounds. At the end of the 26-round Champ Rugby regular season, the table will be split into qualification stages. The teams ranked from third to sixth will take part in quarter finals to earn entry into the semi-finals, where the winners will take on the top two ranked sides.

The winners of the semi-finals enter the final to determine the Champ Rugby champion.

The overall winner will then face the bottom Premiership Rugby club in a promotion/relegation play-off, in both a home and away leg, to determine which league they will play in for the following campaign, subject to meeting the [minimum standards criteria](#).

At the bottom end of the table, the team that finishes in 14th place will be relegated to National 1. The teams that finish in 12th and 13th will face-off in a one-legged fixture, with the loser taking part in a play-off against the winner of the National League 1 play-off to determine who will play in Champ Rugby for the following season. This play-off (Access Final) will be a one-legged fixture, with the winner joining the champion of National League 1 in Champ Rugby, subject to the teams meeting [Champ Rugby Minimum Operating Standards](#).



Simon Gillham, Tier 2 Board Chair, said: *“We are excited to announce the structure of Champ Rugby, which will bring a highly competitive and gripping conclusion to the season, providing both aspiration and jeopardy.*

“We have worked closely with the clubs and stakeholders on developing a compelling league format that rewards ambition and plays a key role in growing the sport, supporting both player and club development.

“Building up English rugby’s second tier competition is critical to the transformation of the elite game in this country, and we are at the start of that journey. Delivering high quality event day experiences, gripping on-field drama at the conclusion of the season and more compelling digital and visual content will support our transformation aims for the league.

“We have developed a really strong brand identity which we believe showcases everything the league represents and the impact we know it will have on the sport, our players, communities and fans. It will appeal to both existing supporters of the league as well as being exciting and compelling for a new and younger audience as well as importantly potential sponsors and investors in the league.

“We look forward to seeing the new brand roll-out across both central Champ Rugby channels as well as those of the clubs as preparation for the 2025-26 season starts in earnest.”



A detailed fixture release will be announced in the coming weeks.

Match Preview: Brentford v Fulham

Written by Brentford Football Club

Analysis, team news, match officials and more. Here's everything you need to know ahead of Brentford's west London derby against Fulham in the Premier League on Sunday (3pm kick-off BST)

Brentford host Fulham at Gtech Community Stadium on Sunday, with the west London derby their final home fixture of the Premier League season (3pm kick-off BST).

Both teams can still potentially qualify for the UEFA Europa Conference League, but head into this game in differing form: the Bees have won their last four matches, while this weekend's opposition have lost four of their last five.

Analysis, team news, match officials and more. Here's everything you need to know ahead of a huge game in TW8.

Pre-match Analysis

Stephen Gillett, Playmaker Stats: Plenty at stake in crucial west London derby

Brentford host Fulham in their final home game of the season on Sunday and, interestingly, the west London rivals are each closing in on their highest-ever Premier League points tallies.

Marco Silva's side need only one more win to break Fulham's all-time Premier League points record (set in 2008/09) of 53 points, while Thomas Frank's Bees need a win and a draw from their remaining two fixtures to match the 59 points they chalked up during the 2022/23 campaign.



European football next season remains a possibility for both teams, although Brentford - four points clear of the 11th-placed Cottagers - are currently in the box seat for the extra UEFA Europa Conference League spot that will be awarded to the Premier League should Manchester City defeat Crystal Palace in the FA Cup final.

There's plenty at stake, therefore, and the stats suggest that a topsy-turvy encounter could be on the cards.

Fulham looked on course for victory last weekend against Everton, after Raúl Jiménez's thumping header put them in front at Craven Cottage, but the Toffees equalised via a somewhat fortunate deflected strike from Vitalii Mykolenko on the stroke of half-time and then powered to a 3-1 victory after the break.

The Cottagers have now dropped 28 points from losing positions this term, a figure only matched by relegated Southampton in the Premier League in 2024/25.

Brentford can probably relate to Fulham's frustrations given that the Bees dropped 30 points - the most in the division - from leading positions in 2023/24, and while the Bees have improved in this regard this season, Frank's side have still lost five games in which they have led during the current campaign.

On the flip side of that coin, however, both Brentford and Fulham have proved to be two of the most resilient sides in the Premier League this term.

Only Liverpool (22), Man City (20) and Newcastle (19) have won more points from losing positions than Fulham (18) going into Sunday's clash and Brentford (17) are right behind them.

What is also clear regarding Fulham's season so far is that it has been a collective effort - and the Cottagers currently boast the most prolific bench in the Premier League.

With Brazilian gamechanger Rodrigo Muniz leading the way with six goals off the bench, Fulham have scored a whopping 15 (29 per cent) of their 51 league goals via substitutes this season and Marco Silva's side have carried a huge attacking threat late in games - only Bournemouth (18) scoring more Premier League goals after 75 minutes than the Cottagers (17).

Fulham may finish strong, but Brentford have earned renown for their fast starts this season and only Liverpool (38), Man City (38) and Newcastle (37) have scored more top-flight goals before half-time than the Bees (32) this term.

Fast starts, fluctuating scorelines, game-changing subs and buckets of late goals... Sunday has all the potential ingredients you could wish for if you were planning to whip up a belting west London derby!

Scout Report

Dan Long, *Sky Sports*: Patchy run of results leaves Fulham with mountain to climb in European chase

Many thought Fulham would struggle when Aleksandar Mitrović - the club's seventh-highest goalscorer of all time - left for Saudi Arabia in August 2023, but they coped without him.



And there were similar conversations last summer, when João Palhinha finally left for Bayern Munich, 11 months after his initial move to the Bundesliga giants had broken down when the Whites were unable to secure a suitable successor for the midfielder.

Once again, they found a way to make it work once their star man had departed.

Marco Silva's side picked up 12 points from their first nine Premier League

games, then ended a three-match winless run with a dramatic victory over Brentford in the west London derby on 4 November.

"Tonight had been our season so far: dominant, the best team on the pitch, creating many more chances. But the reality is we didn't get the points we deserved from the games," he said afterwards. *"Sometimes football takes from you, but in the end, it gives to you if you keep working hard."*

Following that up with a 2-0 win at Crystal Palace put them seventh for the November international break and, off the back of an unbeaten December - comprising two wins and five draws - on New Year's Day, Fulham occupied eighth spot, just six points behind Chelsea in fourth.

Two Raúl Jiménez penalties salvaged a 2-2 draw at home to Ipswich in their first game of 2025 to extend their unbeaten run to eight, but Silva responded afterwards to talk of finishing in a European spot and urged realism.

"I prefer our team to speak on the pitch," he said. *"If you want to be fighting [for Europe], you have to be much more ruthless and aggressive."*

His side won three of the next five, a run that included victories over fellow European hopefuls Newcastle and Nottingham Forest, but a patchy run of results since late February has diminished hopes. And last Saturday's 3-1 loss to Everton at Craven Cottage has left them with a mountain to climb.

Whether there is a Conference League spot up for grabs for the team that finishes eighth hinges on Manchester City beating Crystal Palace in the FA Cup final, but Fulham, in 11th, are four points behind Brentford, in eighth, anyway. *"It felt like last chance saloon and they lost,"* said [Jack Kelly in Hot off the Press](#).

Depending on the result at Wembley, a west London derby win could take the battle down to the final day.

European qualification and a downturn in results aside, Fulham still have the chance to make 2024/25 one of their best Premier League seasons to date, statistically.

Five goals would better the 55 they scored in 2022/23 and 2024/25, while one win from the final two games would not only match their best of 15, set in 2022/23, but it would also set a new points record, which currently stands at 53, achieved under Roy Hodgson in 2008/09.

That season, they qualified for the Europa League. But even if they break that record in the final fortnight, it still might not be enough to do similar 16 years on.

In the Dugout

Marco Silva

Marco Silva passed 13 years in management in September and has now taken charge of almost 500 matches in Portugal, Greece and the UK.

After a playing career as a right-back in his home country, the Portuguese was appointed director of football at Estoril in 2011, but was quickly thrust into his first role as leading man when the club endured an unfavourable start to the campaign and Vinicius Eutrópio was sacked.

Silva managed to turn the club's fortunes around, winning the Liga de Honra - Portugal's second tier - and cementing a return to the Primeira Liga after a seven-year exile.

In 2014, Silva signed a four-year deal at Sporting CP and went on to win the Taça de Portugal – the Portuguese cup - but he lasted just over a year in charge.

Shortly after the cup win, the club produced a 400-page document where they detailed the reasoning for his dismissal, with one section claiming his failure to wear a club suit during a match partly justified the decision.

A title-winning season at Olympiacos came next, before he took on a fire-fighting job at relegation-threatened Hull in January 2017.

Silva galvanised a Tigers team that included Harry Maguire and Andy Robertson, but ultimately could not prevent the club dropping back into the Championship, and he resigned just under five months later.

That preceded time at Watford and Everton, before he joined Fulham as their new head coach in July 2021. He won the Championship title with the club in 2021/22, before guiding them to their first top-half Premier League finish since 2011/12 in 2022/23.

Silva reached 150 games in charge in October and is approaching four years in the job, making him the club's longest-serving manager since Chris Coleman, who left in 2007. He is also currently the seventh-longest serving manager in the top four divisions of English football



WHO warns of slowing global health gains in new statistics report

WHO published its World health statistics report 2025, revealing the deeper health impacts caused by the COVID-19 pandemic on loss of lives, longevity and overall health and well-being. In just two years, between 2019 and 2021, global life expectancy fell by 1.8 years—the largest drop in recent history—reversing a decade of health gains. Increased levels of anxiety and depression linked to COVID-19 reduced global healthy life expectancy by 6 weeks—erasing most of the gains made from lower mortality due to noncommunicable diseases (NCDs) during the same period.



Photo ©WHO / Billy Miaron

The report also summarizes global data on progress towards WHO's triple billion targets, revealing impacts of not just the pandemic shock but also a longer trend of slowing progress starting before the pandemic, followed by a slower recovery since. WHO warns that overall progress is under threat and urgent global action is needed to get back on track.

"Behind every data point is a person—a child who didn't reach their fifth birthday, a mother lost in childbirth, a life cut short by a preventable disease," said Dr Tedros Adhanom Ghebreyesus, WHO Director-General. "These are avoidable tragedies. They point to critical gaps in access, protection, and investment—especially for women and girls. Health progress is slowing. Every government has a responsibility to act, with urgency, commitment, and accountability to the people they serve."

Health progress and setbacks

The World health statistics 2025 report presents mixed progress towards WHO's Triple Billion targets. An estimated 1.4 billion more people were living healthier by the end of 2024, surpassing the 1 billion target. The progress in healthier lives was driven by reduction in tobacco use, improved air quality and better access to water, hygiene, and sanitation. But progress towards increased coverage of essential health services and protection from emergencies lagged; only 431 million more people gained access to essential health services without financial hardship, and close to 637 million more people were better protected from health emergencies.

Maternal and child deaths are not falling fast enough to reach global targets. Progress has stalled, putting millions of lives at risk. This slowdown follows two decades of remarkable gains: between 2000 and 2023, maternal deaths dropped by over 40% and child deaths under 5 years of age more than halved. But underinvestment in primary health care, shortages of

skilled health workers, and gaps in services like immunization and safe childbirth are now holding countries back.

Without urgent course correction to meet the 2030 targets, the world risks losing the chance to prevent an additional 700 000 maternal deaths and 8 million under-5 deaths between 2024 and 2030.

Chronic diseases leading to more loss of lives

Premature deaths from NCDs—such as heart disease, stroke, diabetes, and cancer—are rising, driven by population growth and aging, and now account for most deaths among people under the age of 70, worldwide. The world is currently off track to reduce NCD premature mortality by one-third by 2030. Progress has been possible where governments and civil society have committed to action: tobacco use is declining, and global alcohol consumption dropped from 5.7 to 5.0 litres per capita between 2010 and 2022. Air pollution remains one of the top causes of preventable death worldwide. The impact of poor mental health continues to hold back progress.

Recovery in essential health services remains incomplete. A shortfall of 11.1 million health workers is still projected by 2030, with nearly 70% of the gap concentrated in the WHO African and Eastern Mediterranean regions.

“Strong health systems rely on strong health information. Timely, trusted data drives better decisions and faster results,” said Dr Haidong Wang, WHO Unit Head for Health Data and Analytics. *“WHO is supporting countries through the SCORE strategy to strengthen health information systems, and through the World Health Data Hub, which is helping to standardize, improve, and unlock the value of data across countries and systems.”*

Uneven progress on infectious diseases

HIV and TB incidence rates are falling, and fewer people need treatment for neglected tropical diseases. But malaria has been resurging since 2015, and antimicrobial resistance remains a public health challenge. In 2023, childhood vaccination coverage—including third dose diphtheria-pertussis-tetanus containing vaccine (DTP3)—had not returned to pre-pandemic levels. Many countries are also falling behind in addressing foundational health risks—such as malnutrition, air pollution, and unsafe living conditions.

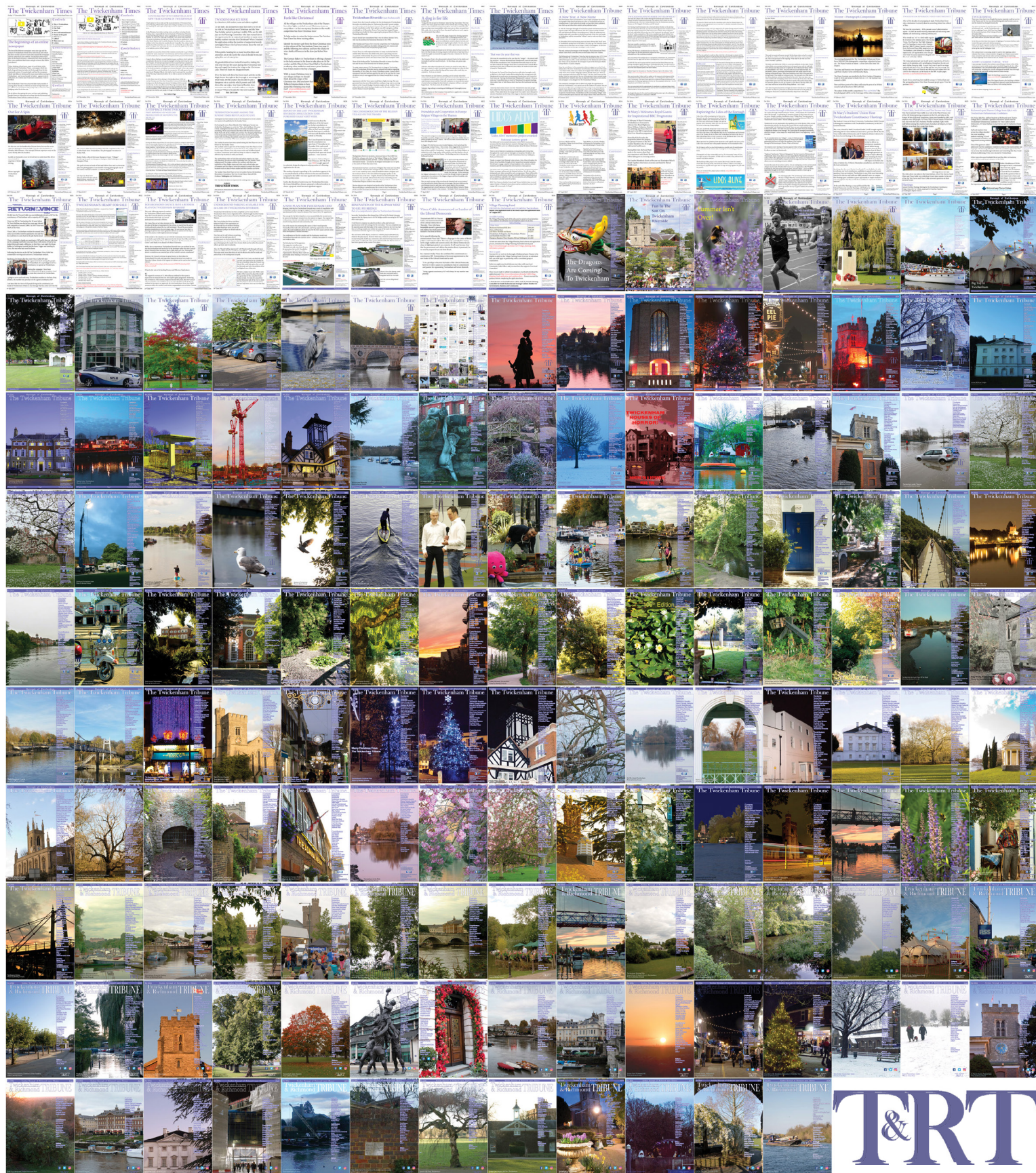
Recent disruptions in international aid further threaten to destabilize progress, particularly in countries with the greatest health-care needs. Sustained and predictable financing—from both domestic and international sources—is urgently needed to protect hard-won gains and respond to rising threats.

“This report shows that the world is failing its health checkup. But countries have shown that rapid progress is possible,” said Dr Samira Asma, WHO Assistant Director-General for Data, Analytics and Delivery for Impact. *“Together, we can achieve a world where data is timelier and more accurate, programmes improve continuously, and premature deaths become rare. With speed, scale, and smart investments, every country can deliver measurable gains.”*



**World Health
Organization**

445 editions of the **Twickenham & Richmond Tribune** online - Lots to read: News, Reviews, History, Sports and On-going Sagas in the Borough of Richmond upon Thames



Half Page

Quarter Page
Landscape

Quarter Page Portrait

Eighth Page

Eighth Page
Landscape

Example advert sizes shown above

Thousands read The Twickenham & Richmond Tribune

If you are reading this you could be advertising your business with
The Twickenham & Richmond Tribune. Community rates are
available

Contact: advertise@TwickenhamTribune.com

View ad details at www.TwickenhamTribune.com/advertise

Contact

contact@TwickenhamTribune.com
letters@TwickenhamTribune.com
advertise@TwickenhamTribune.com



Published by:

Twickenham & Richmond Tribune (in association with World InfoZone Limited)

Registered in England & Wales

Reg No 10549345

The Twickenham Tribune is registered with the ICO under the Data Protection Act, Reg No ZA224725

©Twickenham & Richmond Tribune. All rights reserved. No part of this publication may be used or reproduced without the permission of Twickenham & Richmond Tribune. While we take reasonable efforts, this online newspaper cannot be held responsible for the accuracy or reliability of information. The views and opinions in these pages do not necessarily represent those of The Twickenham & Richmond Tribune.

[Terms & Conditions](#)